

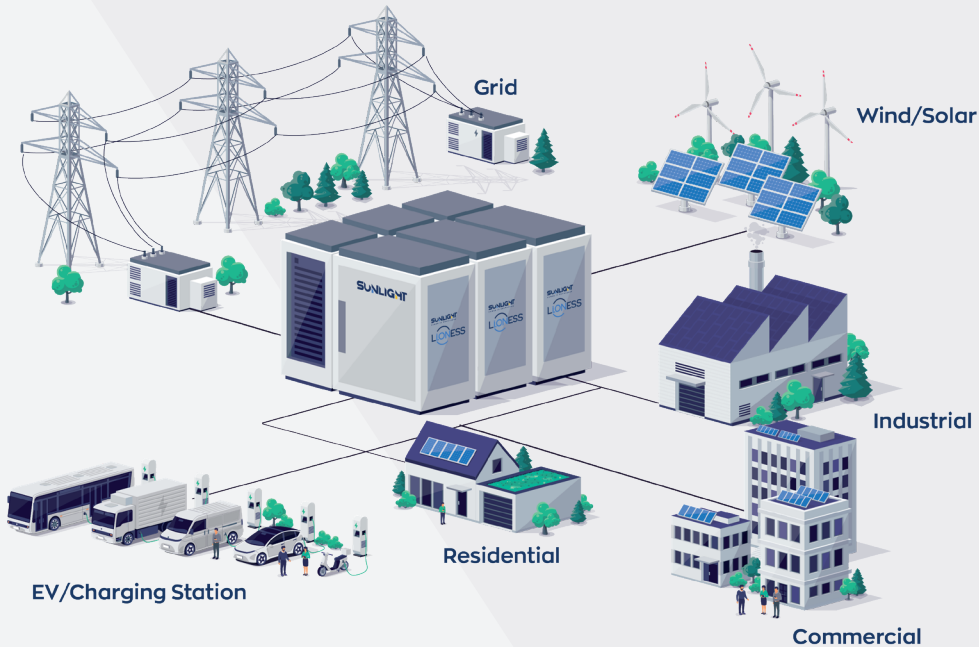
# Turn-key solution for high voltage ESS applications



## Technical Specifications

|  |   |  |
|--|---|--|
|  <p><b>Best Cost of Storage</b></p> | Highest energy density                        | Liquid cooled 1376.25 kWh in 3592 x 2596 x 2176mm  |
|  | Extended voltage range                        | 1075.0 V - 1401.6 V (SOC 0% - 100%)  |
|  | Extra-long degradation curve                  | Min. 8000 cycles at 0.5 Cp   |
|  | Top efficiency                                | RTE >= 97% at 0.5 Cp @STC - Aux max < 5kW  |
|  | Drop-ship                                     | ~13000 kg, ships fully equipped and tested anywhere - save on field installation   |
|  | Smart BMS                                     | 3 levels temperature control, failure diagnostics, automatic enumeration, FOTA update, virtual capacity split for optimal combination with PCS         |
|  <p><b>Safety</b></p>               | State of art fire suppression system          | Aerosol type F/E A1000 ECO GREEN (UL)  |
|  | Explosion prevention                          | Deflagration panels acc. to NFPA 68  |
|  | Intrusion protection                          | Lockable, open-door sensor   |
|  | Serviceability                                | Door locking in open position  |
|  | PPU safety functionalities                    | Short circuit protection, over- and under-voltage protection, over- and under-temperature protection, manual disconnection, string current measurement |
|  | DC protection main logic and minimum hardware | Redundant fuse, contactor and disconnecter at string level   |
|  <p><b>Plug &amp; Play</b></p>    | Connectivity                                  | Easy connection to neighboring units and PCS   |
|  | On site                                       | Fast installation and commissioning. Pre-populated modules   |
|  <p><b>Certifications</b></p>     | Battery                                       | IEC 62619 / IEC 62933-5-2 / UL 1973 / UL 9540  |
|  | Logistics                                     | UN38.3   |
|  | Electrical                                    | IEC / UL / CE / FCC  |
|  | Fire  | NFPA 855 / UL9540A   |
|  <p><b>Resilient design</b></p>   | Operational temperature range                 | -20 to 50°C  |
|  | Corrosion resistance                          | C3 (C5M as an option)  |
|  | Ingress protection                            | IP54   |
|  | Fire resistance rating                        | 1h FR  |
|  | Seismic rating                                | Zone 4 according to Telcordia GR-63  |
|  | Wind resistance                               | Hurricane CAT 3 (50-60 m/s)  |

Advanced and interoperable BMS with enhanced diagnoses and prognoses functions:



- Ensures a reliable, safe, and efficient operation of BESS
- Optimise battery usage
- Monitors important battery parameters influencing performance and aging of the battery
- Increase ROI

## Key features

Sunlight Li.ON ESS Advanced DC Block is a fully integrated modular and turn-key storage solution designed for a diverse set of market applications with high flexibility, reliability and safety.



Integrated solution offering modularity for projects of any size



Outdoor rated cabinet designed to operate in the most harsh environments



Multilevel safety according to NFPA 855:
 

- fire protection
- heat and gas detection
- emergency shutdown



Integrated solution minimizing commissioning time



High availability ensured through redundant CAN network



Design according to IEC and UL standards



High cyclability leads to reduced LCOS



Liquid cooling



**Sunlight Group Energy Storage Systems**  
Headquarters Greece T: +30 210 624 5400

[info@sunlight.gr](mailto:info@sunlight.gr)  
[the-sunlight-group.com](http://the-sunlight-group.com)

